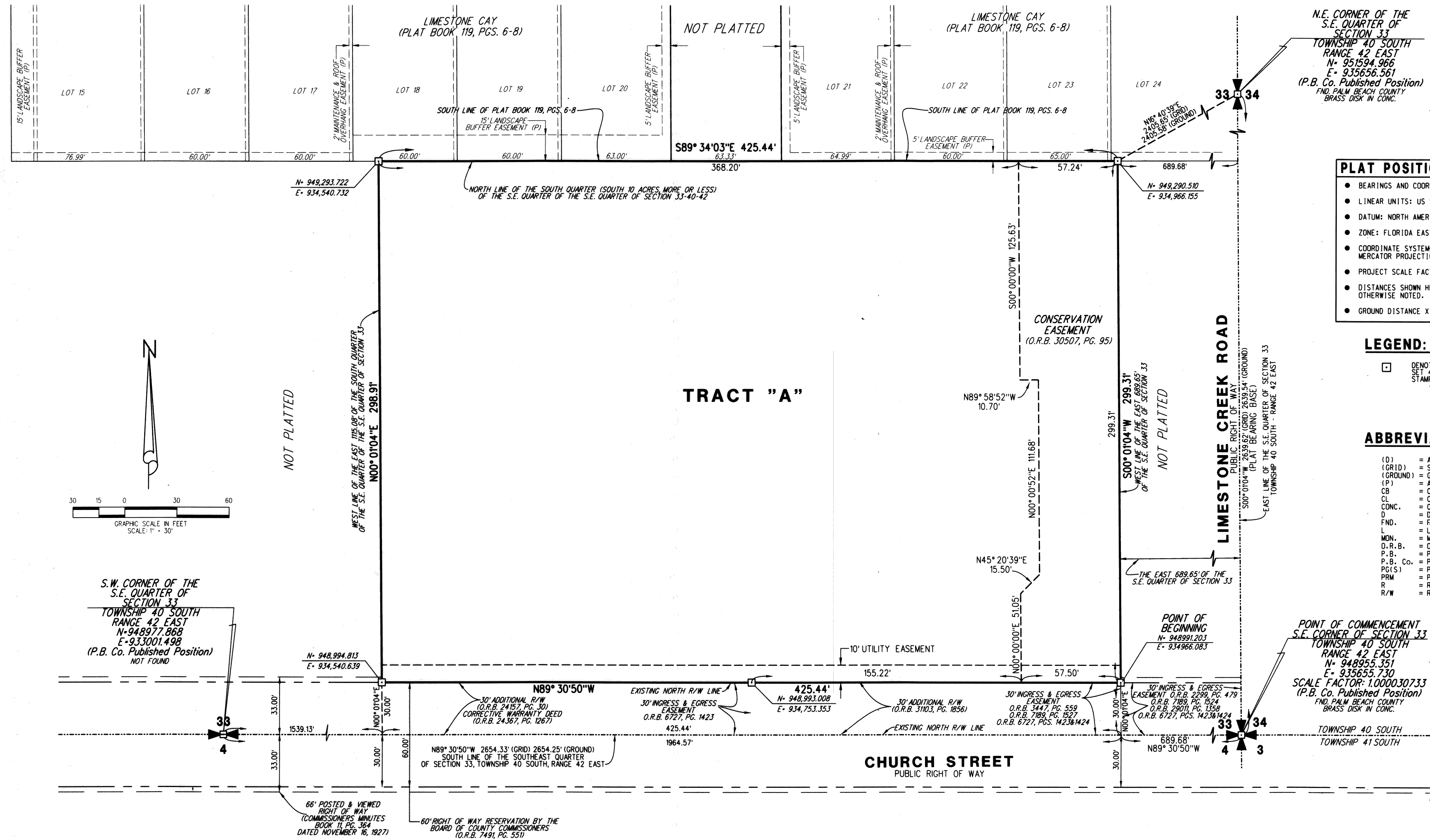


WEST JUPITER COMMUNITY CENTER

BEING A PORTION OF SECTION 33, TOWNSHIP 40 SOUTH, RANGE 42 EAST
PALM BEACH COUNTY, FLORIDA

113
SHEET 2 OF 2



N.E. CORNER OF THE
S.E. QUARTER OF
SECTION 33
TOWNSHIP 40 SOUTH
RANGE 42 EAST
N- 935194.966
E- 935656.561
(P.B. Co. Published Position)
FND. PALM BEACH COUNTY
BRASS DISK IN CONC.

- PLAT POSITION AND ORIENTATION**
- BEARINGS AND COORDINATES SHOWN HEREON ARE GRID
 - LINEAR UNITS: US SURVEY FOOT
 - DATUM: NORTH AMERICAN DATUM OF 1983/1990 ADJUSTMENT
 - ZONE: FLORIDA EAST
 - COORDINATE SYSTEM: 1983 STATE PLANE TRANSVERSE MERCATOR PROJECTION
 - PROJECT SCALE FACTOR: 1.000030733
 - DISTANCES SHOWN HEREON ARE GROUND DISTANCES, UNLESS OTHERWISE NOTED.
 - GROUND DISTANCE X SCALE FACTOR = GRID DISTANCE

- LEGEND:**
- DENOTES SET PERMANENT REFERENCE MONUMENT SET 4"X4" CONCRETE MONUMENT WITH DISK STAMPED "PRM LB 4431"

- ABBREVIATIONS:**
- (D) = AS SHOWN ON DEED
 - (GRID) = STATE PLANE GRID DISTANCE
 - (GROUND) = GROUND DISTANCE
 - (P) = AS SHOWN ON PLAT
 - CB = CHORD BEARING
 - CL = CHORD LENGTH
 - CONC. = CONCRETE
 - D = DELTA ANGLE
 - FND. = FOUND
 - L = LENGTH
 - MON. = MONUMENT
 - O.R.B. = OFFICIAL RECORD BOOK
 - P.B. = PLAT BOOK
 - P.B. Co. = PALM BEACH COUNTY
 - PG(S) = PAGE(S)
 - PRM = PERMANENT REFERENCE MONUMENT
 - R = RADIUS
 - R/W = RIGHT OF WAY

LIDBERG LAND SURVEYING, INC.
675 West Indiantown Road, Suite 200, Jupiter, Florida 33458 TEL. 561-746-8454

CAD. K:\JUST \ 334042 \ 17-015A-306 \ 17-015A-306.DGN	FB. PG.	JOB 17-015A-306
REF.		DATE FEBRUARY 2019
FLD.		DWG. D17-015P
OFF. CASASUS	SHEET 2 OF 2	
CKD. D.C.L.		